



AIRCHARGER®

HIGH-FLOW INTAKE KITS

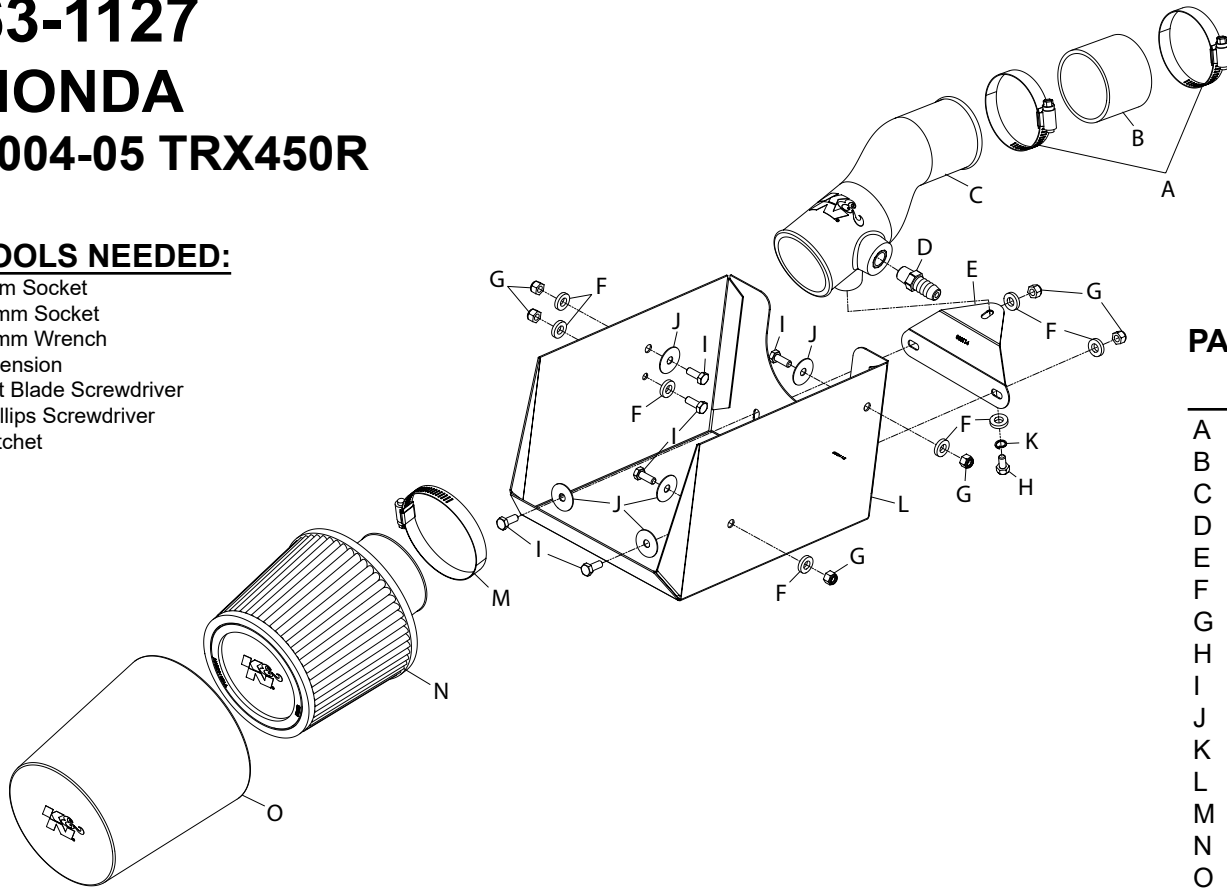
LEGAL IN CALIFORNIA ONLY FOR RACING VEHICLES WHICH MAY NEVER BE USED, REGISTERED OR LICENSED FOR USE UPON A HIGHWAY. See knfilters.com for CARB status on each part for a specific vehicle

INSTALLATION INSTRUCTIONS

63-1127
HONDA
2004-05 TRX450R

TOOLS NEEDED:

- 8mm Socket
- 10mm Socket
- 10mm Wrench
- Extension
- Flat Blade Screwdriver
- Phillips Screwdriver
- Ratchet



PARTS LIST:

Description	Qty.	Part #
A HOSE CLAMP; #36	2	08530
B HOSE; 2-3/8"ID X 2"L	1	08405
C INTAKE TUBE; "HP"	1	087229
D VENT; STRT, 1/2" HOSE, 1/4"NPT	1	080022
E BRACKET; "C"	1	083114
F WASHER; 1/4"ID X 5/8"OD	8	08275
G NUT; 6MM NYLOCK	6	07512
H BOLT; M6 X 1 X 12MM	1	07727
I BOLT; M6-1 X 16MM	6	07812
J WASHER; 1"D X 1/4"HOLE	5	08160
K WASHER; 1/4" LOCK	1	08198
L HEAT SHIELD	1	073113
M HOSE CLAMP; #44	1	08577
N AIR FILTER	1	RU-4960XD
O DRYCHARGER WRAP	1	RX-4990DK

NOTE: It will be necessary to purchase larger carburetor jet from your local Honda dealer. K&N Engineering, Inc. recommends starting with a #170 main jet; however it may be necessary to adjust to different jet sizes depending on altitude and atmospheric conditions.

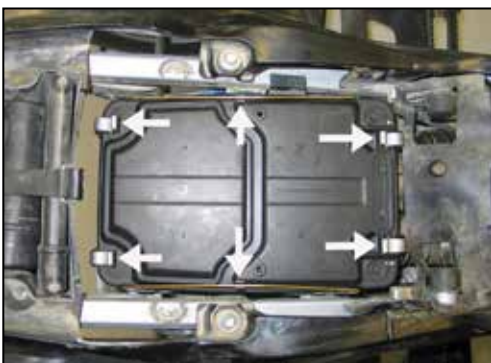
NOTE: The K&N® Drycharger® included with this kit must be installed on the K&N® air filter because of the harsh terrain conditions these vehicles are intended to operate in. Please be aware the Drycharger® is water repellent, not water proof. The K&N® high flow intake system is a performance product that can be used safely during mild and inclement weather conditions if used as directed. Failure to follow these instructions can void your warranty.

NOTE: FAILURE TO FOLLOW INSTALLATION INSTRUCTIONS AND NOT USING THE PROVIDED HARDWARE MAY DAMAGE THE INTAKE TUBE, THROTTLE BODY AND ENGINE.

TO START:



1. Turn off the ignition, unlatch and remove seat and then disconnect the negative battery cable.



2. Release the two spring clips and four spring latches retaining the air box lid.



3. Remove air box lid.

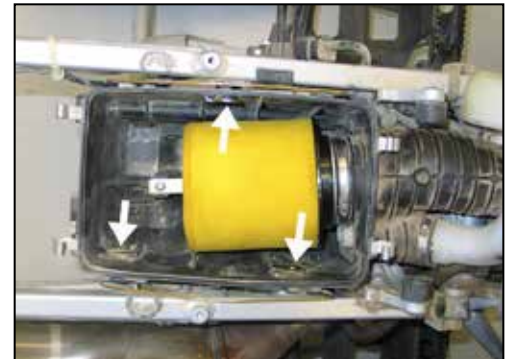


4. Remove the crank case vent hose from the air box.

NOTE: Rear body work has been removed for illustration only, it is not necessary to remove rear body work to install this intake kit.



5. Loosen the hose clamp that secures the intake tube to the carburetor intake.



6. Remove the three bolts that secure the air box to the frame.



7. Remove the air box assembly from the vehicle as shown.

NOTE: K&N Engineering, Inc., recommends that customers do not discard factory air intake.

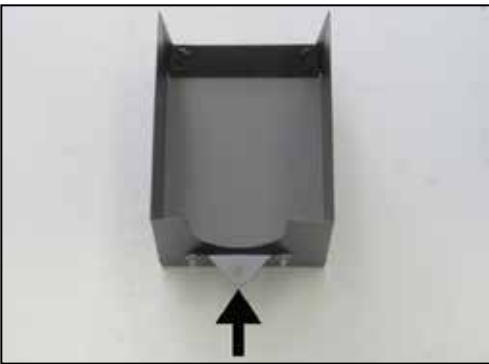


8. Remove the float bowl plug to drain fuel from the carburetor and gain access to the main jet. K&N® recommends replacing the stock main jet with a #170 main jet purchased separately.

NOTE: Be sure to capture any fuel from the carburetor. It may be necessary to adjust to a different jet size depending on altitude and atmospheric conditions.

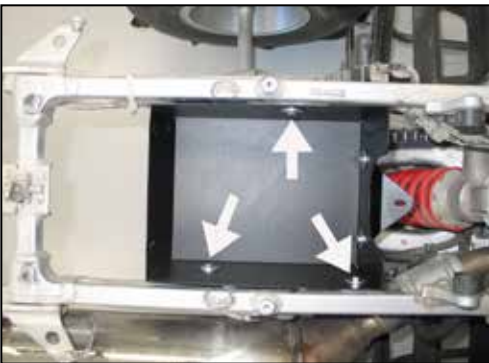


9. Install silicone hose (08405) onto the carburetor inlet and secure with provided hose clamp.



10. Install the tube mounting bracket (083114) onto the heat shield with provided hardware as shown.

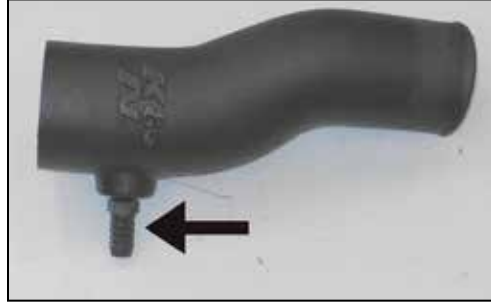
NOTE: Please do not completely tighten bolt at this time.



11. Install air box assembly in frame and secure it to the factory air box mounting locations with provided hardware.



12. Using the factory clip and hardware provided secure the wiring harness to the air box as shown.



13. Install the provided 1/4 NPT vent fitting into the intake tube as shown.



14. Install the intake tube into the silicone hose on the carburetor and align with the mounting bracket installed onto the heat shield, secure with provided hardware and hose clamp.



15. Install the factory crank case vent hose onto the 1/4 NPT fitting installed in the intake tube as shown.



16. Install the K&N® Drycharger® onto the K&N® air filter as shown.

NOTE: Please be aware the Drycharger® is water repellent, not water proof. Depending on conditions and usage the water repellent treatment is good for 1 to 2 years. See the parts list to reorder a new Drycharger® if necessary.



17. Install the K&N® air filter assembly onto the intake tube and secure with the provided hose clamp.



18. Reinstall the seat.

19. Double check to make sure everything is tight and properly positioned before starting the vehicle.

20. It will be necessary for all K&N® high flow intake systems to be checked periodically for realignment, clearance and tightening of all connections. Failure to follow the above instructions or proper maintenance may void warranty.

ROAD TESTING:

1. Start the engine with the transmission in neutral or park. Listen for air leaks or odd noises. For air leaks secure hoses and connections. For odd noises, find cause and repair before proceeding. This kit will function identically to the factory system except for being louder and much more responsive.

2. Test drive the vehicle. Listen for odd noises or rattles and fix as necessary.

3. If road test is fine, you can now enjoy the added power and performance from your kit.

4. K&N Engineering, Inc., requires cleaning the intake system's air filter element periodically for excessive dirt build-up. When used in harsh terrain conditions or off-road environments, our filters will require cleaning more often. We recommend that you visually inspect your filter more frequently when used in harsh terrain conditions to determine if the screen is still visible. When the screen is no longer visible some place on the filter element, it is time to clean it. To clean and re-oil, purchase our filter Recharger® service kit, part number 99-5050 or 99-5000 and follow the easy instructions.

LEGAL IN CALIFORNIA ONLY FOR RACING VEHICLES WHICH MAY NEVER BE USED, REGISTERED OR LICENSED FOR USE UPON A HIGHWAY.

See knfilters.com for CARB status on each part for a specific vehicle